

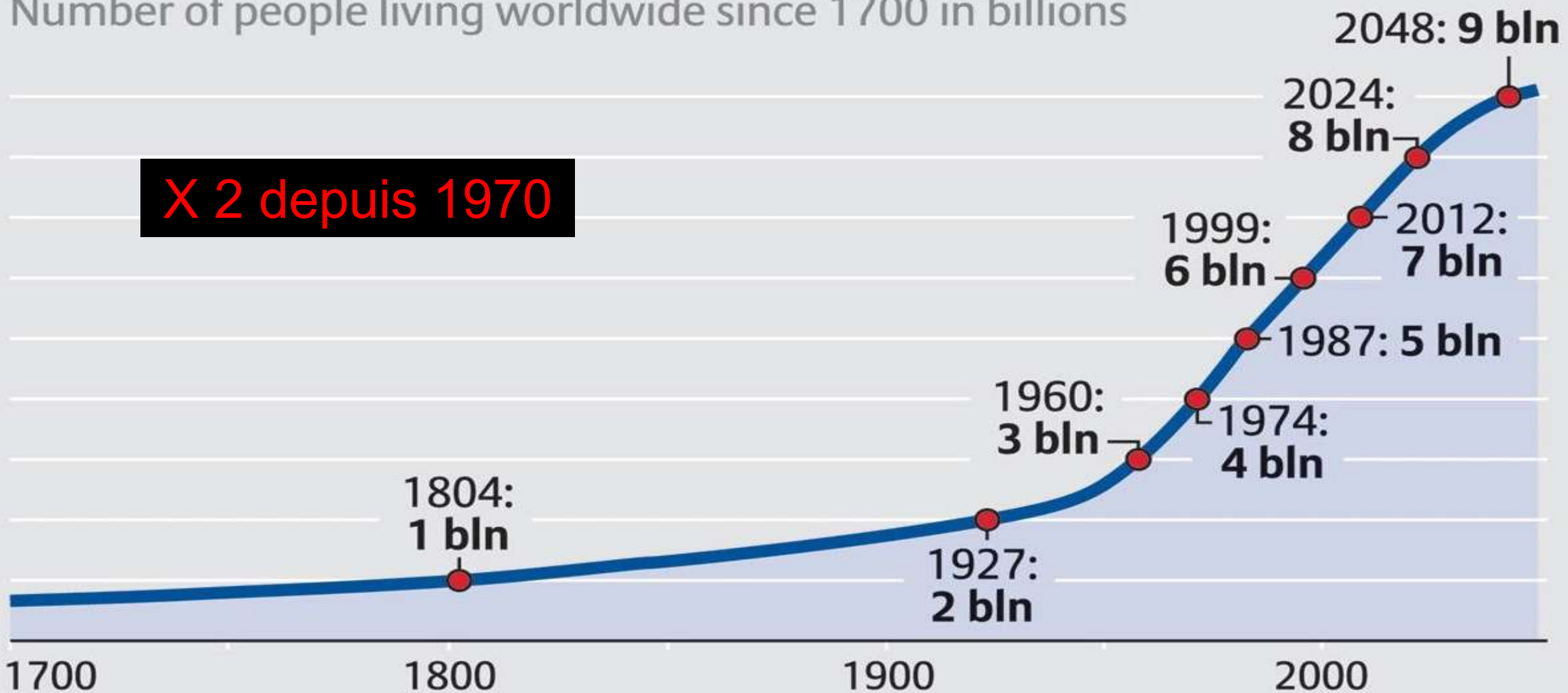
# CLIMAT EN CRISE, PEUPLES EN MOUVEMENT : COMPRENDRE L'URGENCE DES MIGRATIONS



La Louvière, CRI Centre & Wapi, 24 juin 2026



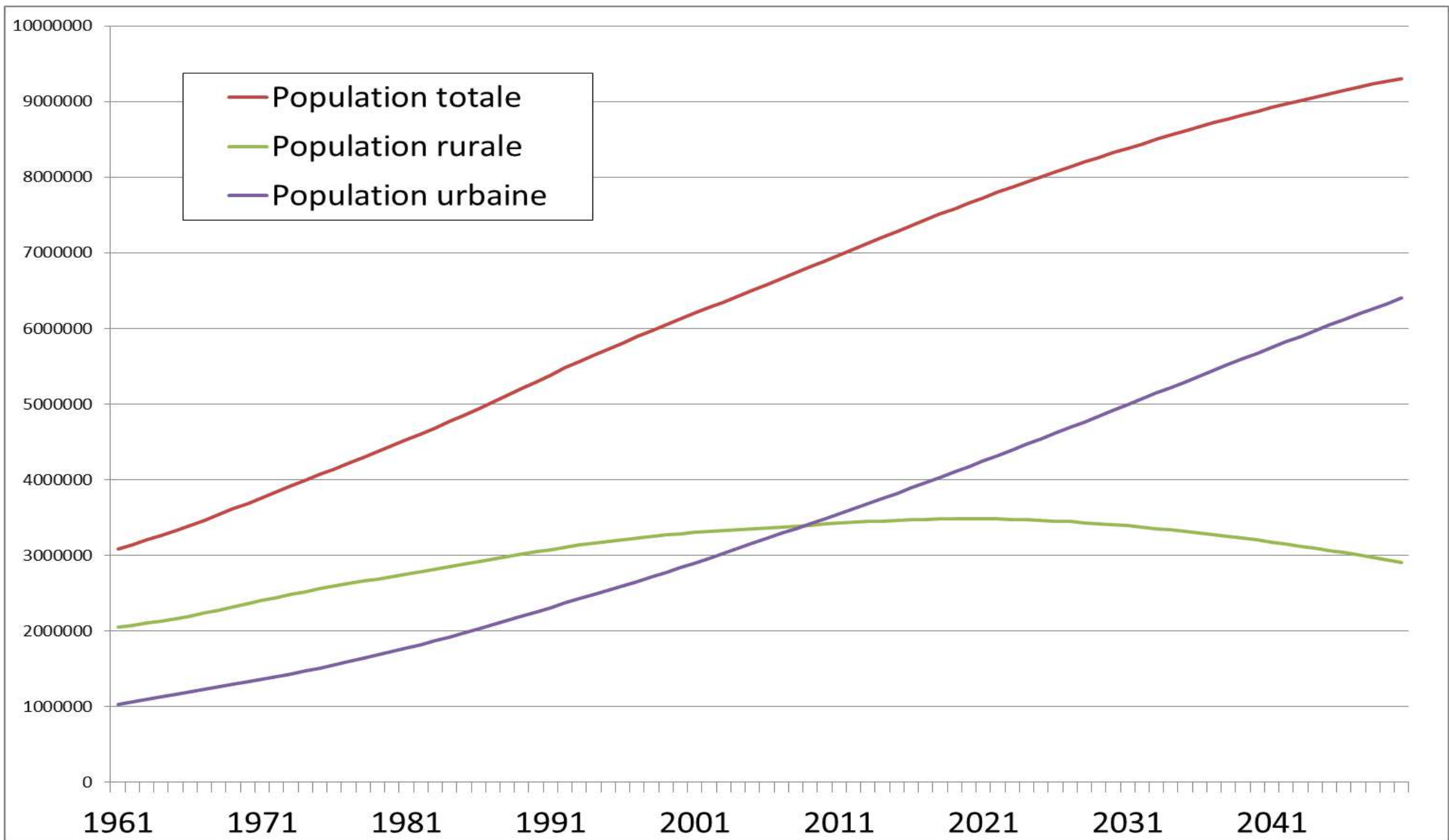
# Number of people living worldwide since 1700 in billions

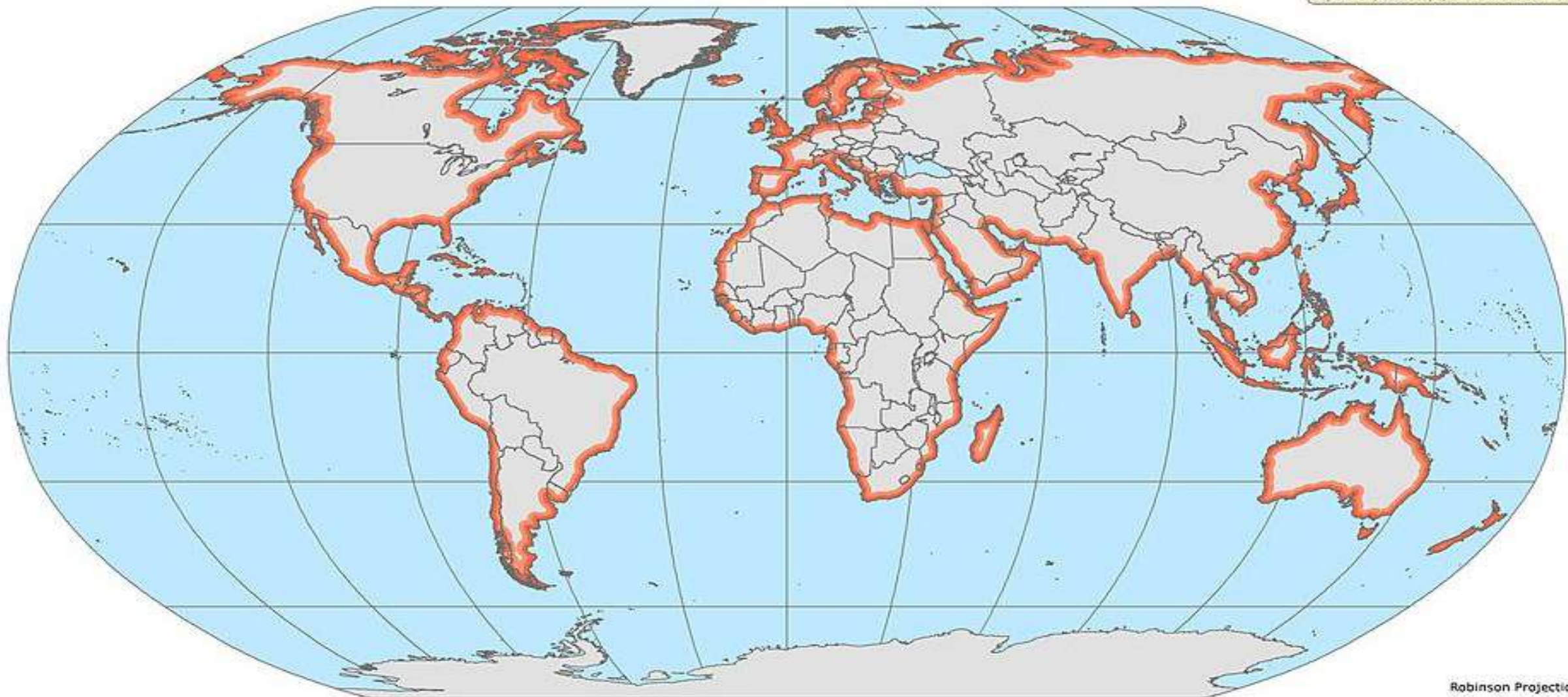


X 2 depuis 1970

Source: United Nations World Population Prospects, Deutsche Stiftung Weltbevölkerung

For further information please visit: [www.knowledge.allianz.com](http://www.knowledge.allianz.com)





Robinson Projection

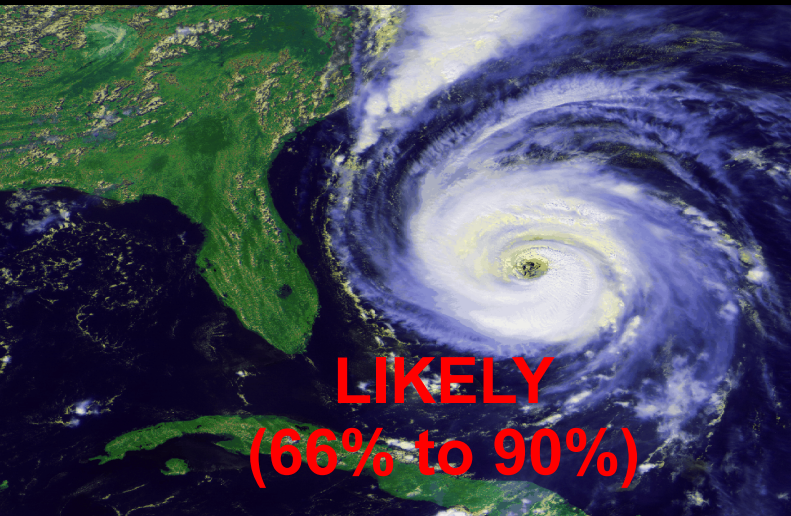
Coastal proximity zones (regions within 5, 10, 100, or 200 km of a coast) were created from the GRUMPv1 shoreline vector layer. The vector layer was first converted into points and densified, then geodesic buffers (5 km, 10 km, 100 km, and 200 km) were created from shoreline vertices and dissolved into polygon features, finally, the polygons were clipped to include just the inland portions of the buffer zones.

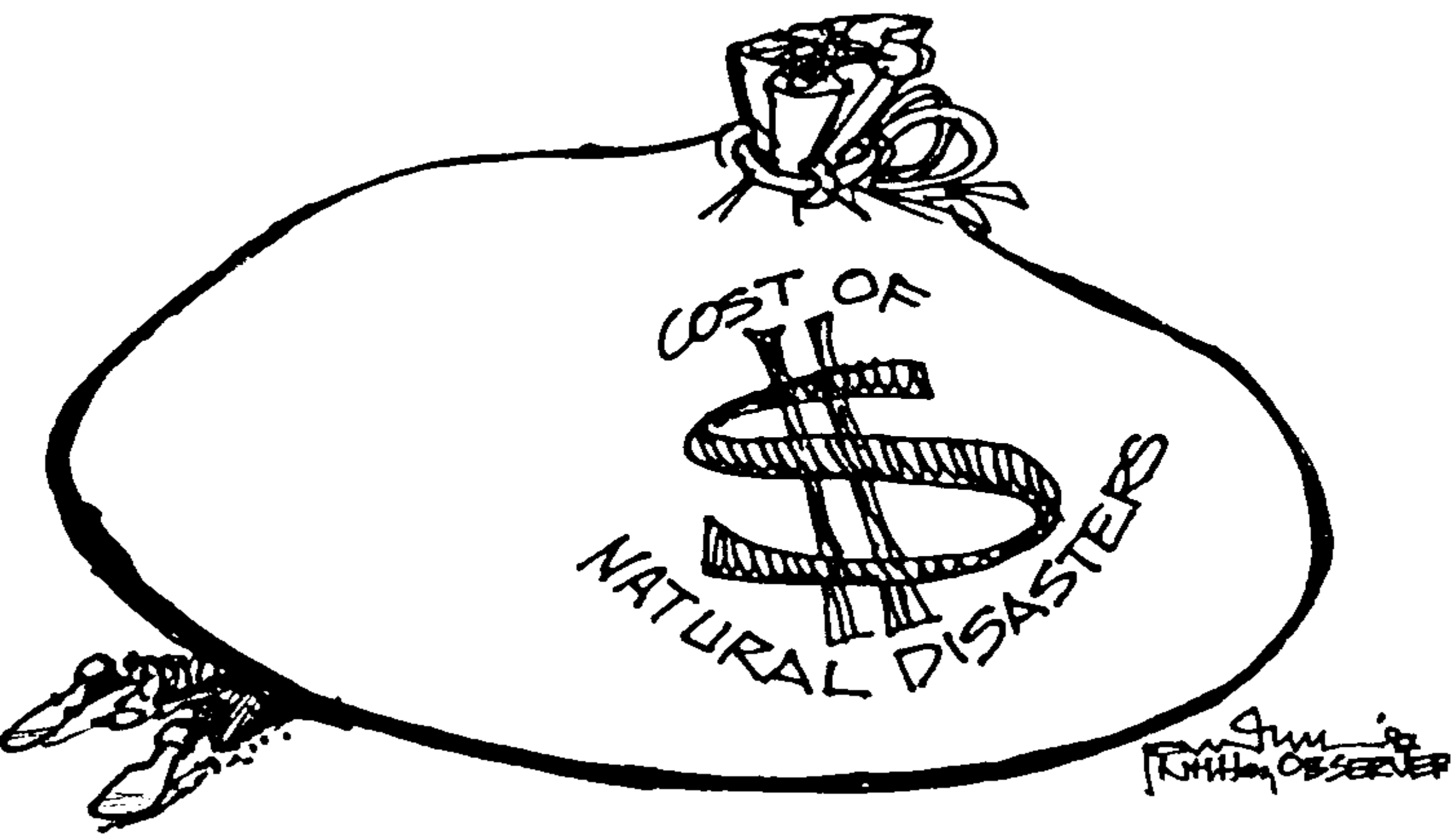
Coastal regions within:

5 km 10 km 100 km 200 km



# Conséquences du changement climatique





Franklin's  
KING OF OBSERVER

# En 2013, les catastrophes naturelles ont déplacé trois fois plus de personnes que les conflits

Le Monde.fr | 17.09.2014 à 12h34 • Mis à jour le 17.09.2014 à 16h15 |

Par Laetitia Van Eeckhout

Abonnez-vous  
à partir de 1 €



Réagir



Classer



Partager



# Avec le changement climatique, des « déplacés » de plus en plus nombreux

Partout dans le monde, des populations sont contraintes de fuir leur terre et leur foyer du fait de l'intensification des catastrophes naturelles extrêmes.

LE MONDE | 02.11.2017 à 06h41 • Mis à jour le 02.11.2017 à 10h50 |

Par **Simon Roger**

Abonnez vous à partir de 1 €

Réagir

Ajouter



Partager (685)

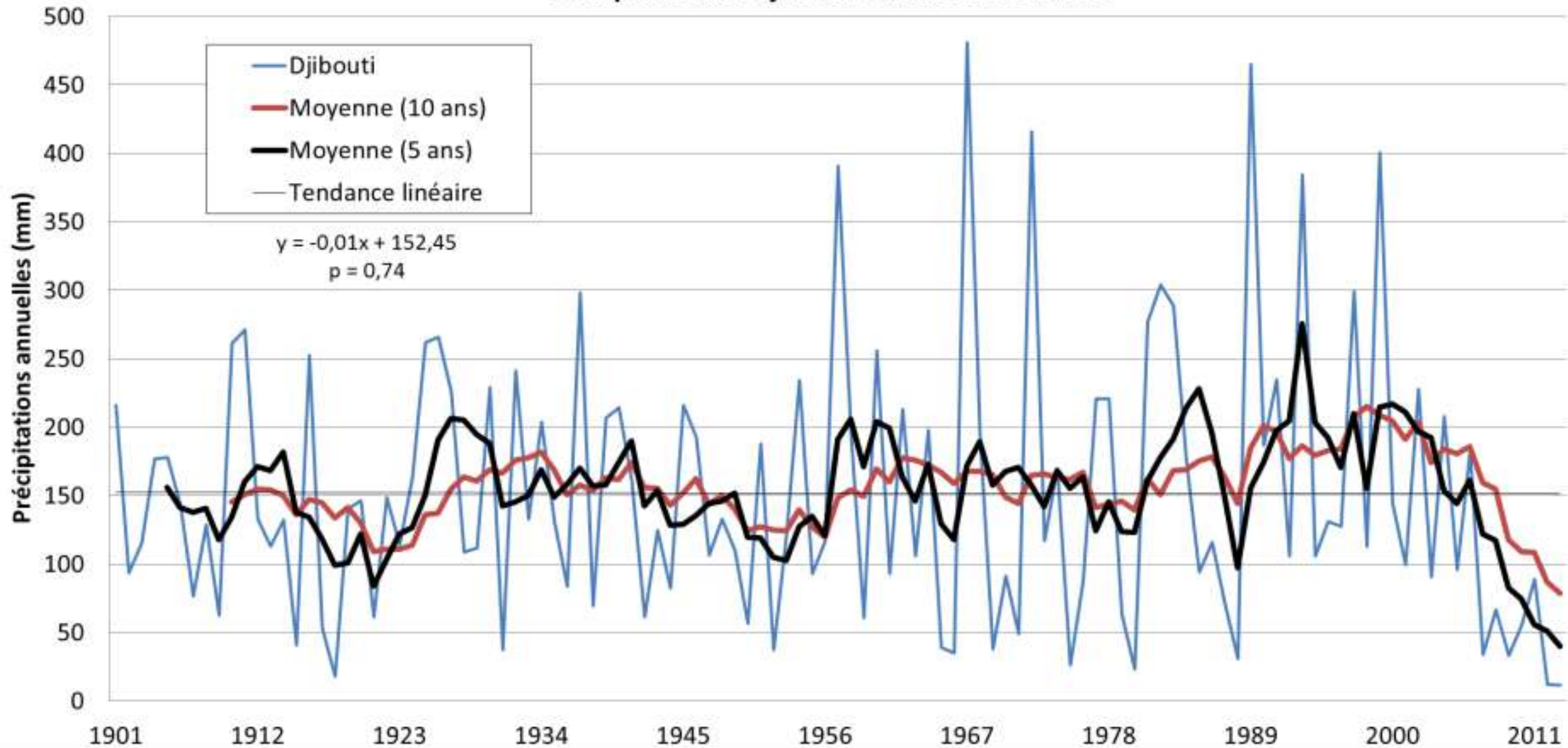
Twitter

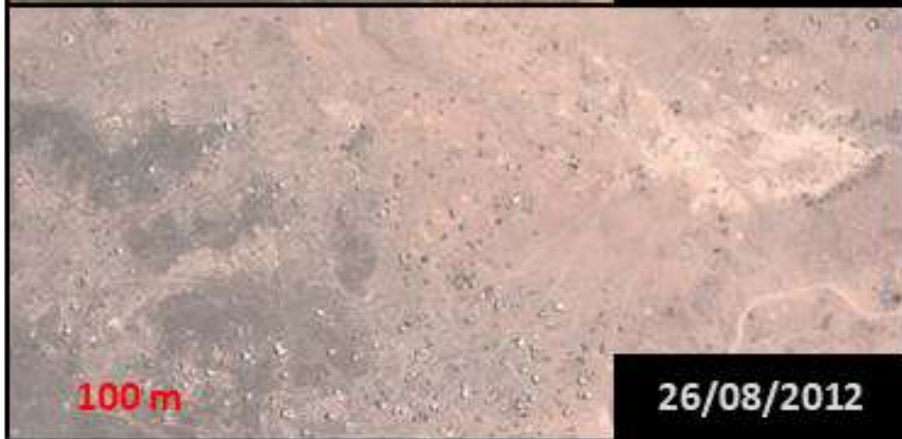
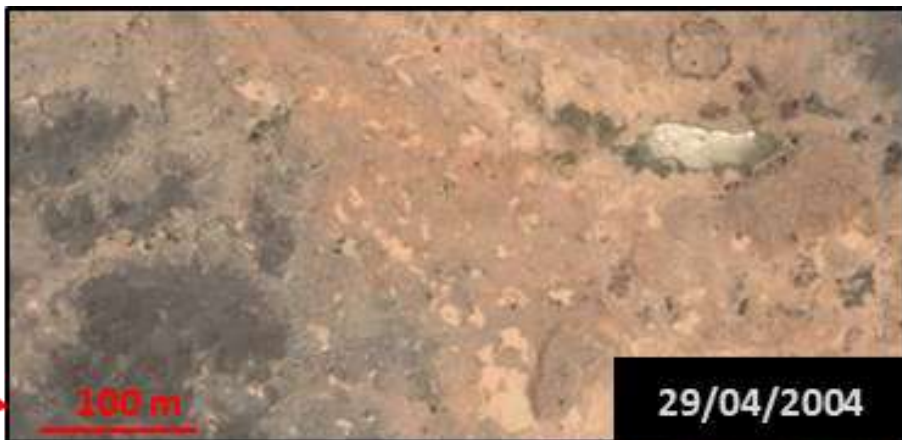


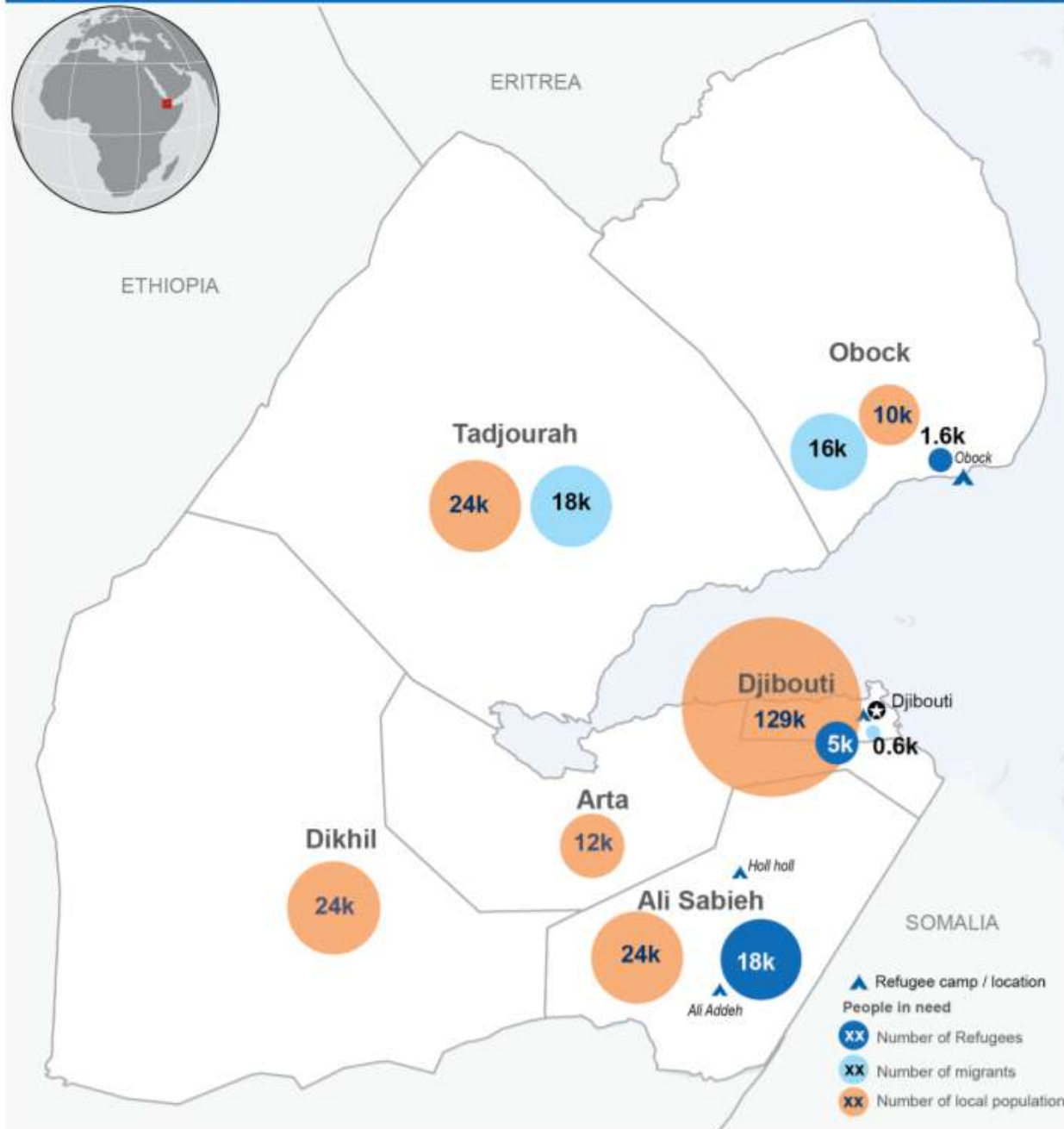
# Djibouti

**Effet des sécheresses régionales de grande ampleur sur les migrations humaines**

### Précipitations à Djibouti-Ville de 1901 à 2013







The boundaries and names shown and the designations used on this map do not imply official endorsement or acceptance by the United Nations  
 Creation date: January 2017 Sources: Humanitarian partners Feedback: ochaesa@un.org www.unocha.org www.reliefweb.int

TOTAL POPULATION	PEOPLE IN NEED
965,598	289,338

# La famine menace à nouveau l'Afrique de l'Est

Vingt millions de personnes ont besoin d'assistance en raison de la sécheresse mais aussi des guerres. L'ONU lance un cri d'alarme pour éviter « une catastrophe ».

LE MONDE | 27.02.2017 à 06h42 • Mis à jour le 27.02.2017 à 16h04 |

Par Bruno Meyerfeld (Nairobi, correspondance)

Abonnez vous à partir de 1 €

Réagir ★ Ajouter  

 Partager (5 094)

 Tweeter



June  
2017



Google Earth

Image © 2017 DigitalGlobe

200 m



August  
2017



Google Earth

Image © 2017 DigitalGlobe



Sept  
2017



Google Earth

Image © 2017 DigitalGlobe

200 m



October  
2017



Google Earth

Image © 2017 DigitalGlobe



# La Corne de l'Afrique vers une cinquième année de sécheresse consécutive, la pire en quarante ans (OMM)



© UNICEF/Mulugaeta Ayene | Une mère a peur de perdre davantage de bétail dans les mois à venir à cause de la sécheresse dans la région Somali, en Ethiopie.



## ARTICLES



Sécheresse : des millions d'enfants au bord de la catastrophe au Sahel et dans la Corne de l'Afrique - UNICEF



Corne de l'Afrique : 15 millions de personnes confrontées à une crise humanitaire en raison de la sécheresse



Corne de l'Afrique : des chances accrues de précipitations supérieures à la normale (OMM)

# Human-induced climate change increased drought severity in Horn of Africa

27 April, 2023

Drought

Africa

Since October 2020 large parts of Eastern Africa have been experiencing extended dry conditions punctuated by short intense rainfall events that often led to flash floods.

The below-average rainfall in the October–December (OND) 2022 season “short rains” was the fifth consecutive failed season since OND 2020, including the below-average March–May (MAM) “long rains” in 2021 and 2022. The resulting drought was reported to be the worst in 40 years ([WMO, 2022](#), [FAO 2022](#)).

The drought has led to substantial harvest failure, poor pasture conditions, livestock losses, decreased surface water availability and human conflicts, leaving 4.35 million people in need of humanitarian assistance ([NDMA, 2022](#)). At least 180,000 refugees from Somalia and South Sudan crossed into the drought-stricken areas of Kenya and Ethiopia ([UNHCR](#)).

By January 2023, close to 9,210 MT of food commodities had been distributed and USD 7.29 million cash-based transfers had been made ([OCHA, 2023](#)). Despite some reported rains in parts of Kenya by the end of March 2023 ([KMD, 2023](#)), the drought conditions are not likely to recover quickly enough to see improvements in food security before mid-2023.

## Full study

Download the full study: Human-induced climate change increased drought severity in Horn of Africa (47 pages, 2.5MB)

Download the peer-reviewed study: Human-induced climate change increased 2021-2022 drought severity in Horn of Africa (48 pages, 2.5MB)

## Guide for journalists

Reporting extreme weather and climate change: a guide for journalists – in a number of languages)

## You may also be interested in...

Unequal evidence and impacts, limits to adaptation: Extreme Weather in 2025

Human-induced climate change compounded by socio-economic water stressors increased severity of 5-year drought in Iran and Euphrates and Tigris basin

10 years of rapidly disentangling drivers of extreme weather disasters

Climate change key driver of extreme

# **Nouakchott, Mauritanie**

**Quand de faibles changements dans les précipitations peuvent avoir des répercussions considérables, notamment en matière de migration**



3/6/2014

03-06-2014

100 m



11/7/2014

11-07-2014

100 m

An aerial photograph of a desert settlement, likely in the Negev region of Israel. The terrain is sandy and brown, with numerous small, rectangular buildings scattered across the landscape. A prominent road or path runs diagonally from the upper right towards the center. A red double-headed arrow in the bottom left corner indicates a scale of 100 meters. The date '11-07-2014' is displayed in the top left and top right corners.

22/7/2014

22-07-2014

100 m

An aerial photograph of a desert landscape, likely in the Middle East, showing a dense grid of small, rectangular structures, possibly tents or small huts, arranged in neat rows. The terrain is sandy and brown. A prominent road or path runs diagonally across the scene. In the bottom left corner, there is a red double-headed arrow with the text "100 m" above it, indicating the scale of the image. The date "22/7/2014" is visible in the top left corner, and "22-07-2014" is displayed in a black box in the top right corner.

10/8/2014

10-08-2014

100 m

An aerial photograph of a desert landscape, likely in the Middle East, showing a dense cluster of small, rectangular buildings or structures. The terrain is arid and sandy. A prominent road or path runs diagonally across the scene. In the bottom left corner, there is a red double-headed arrow indicating a scale of 100 meters. The date '10-08-2014' is displayed in red text in the top right corner, and '10/8/2014' is in the top left corner. The image has a slightly grainy texture and a warm, brownish color palette.

14/9/2014

14-09-2014

100 m

An aerial photograph showing a dense urban grid. The buildings are arranged in a regular pattern of rectangular blocks. A prominent road or canal runs diagonally from the top right towards the bottom center. A red double-headed arrow at the bottom left indicates a scale of 100 meters. The date '14-09-2014' is printed in red in the top right corner, and '14/9/2014' is printed in black in the top left corner.

3/10/2014

03-10-2014

100 m

An aerial photograph showing a dense urban grid. The streets are arranged in a regular pattern, with buildings and other structures filling the blocks. A red double-headed arrow at the bottom left indicates a scale of 100 meters. The date '03-10-2014' is printed in red in the top right corner, and '3/10/2014' is in the top left corner.

30/4/2016

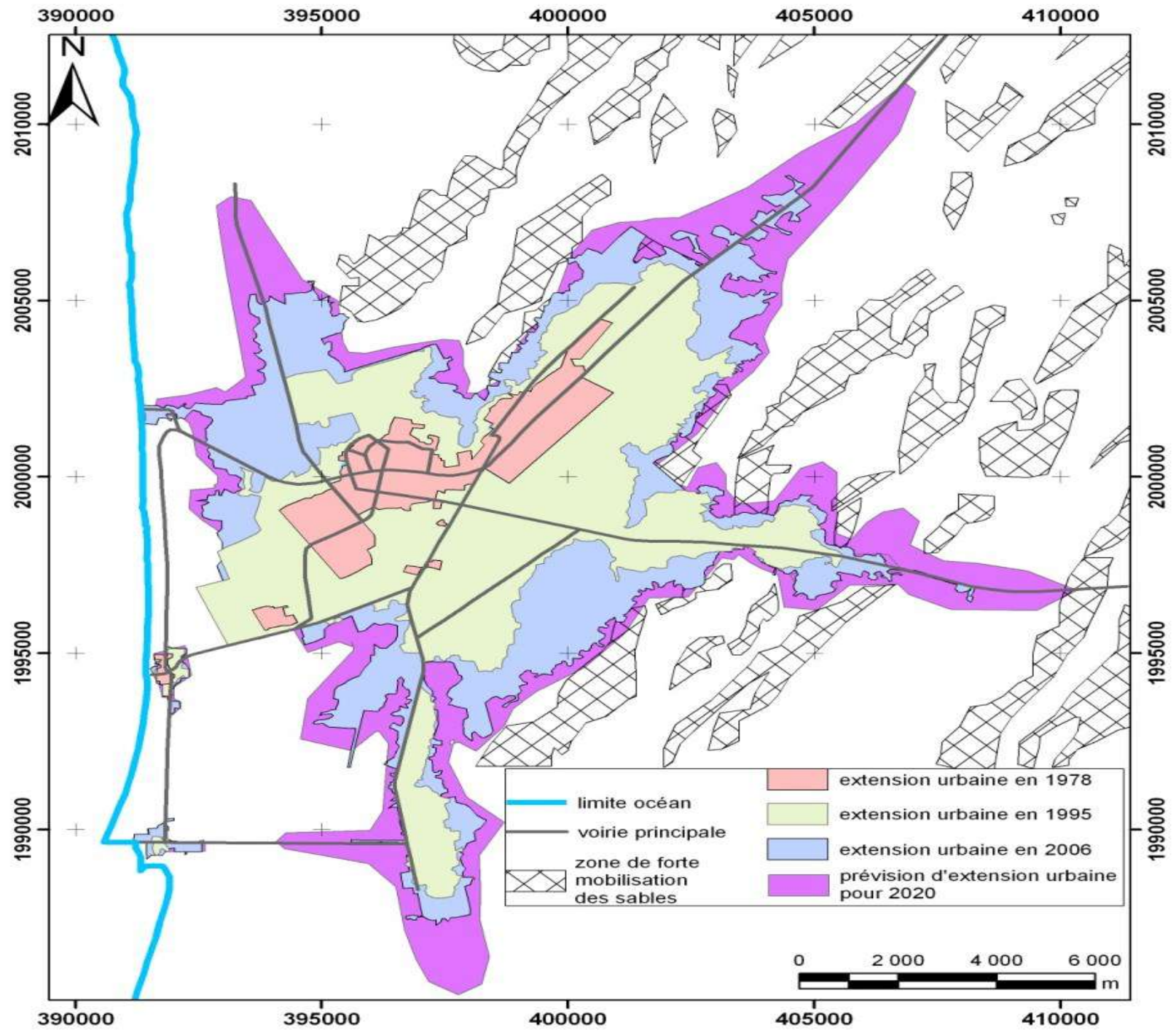
30-04-2016

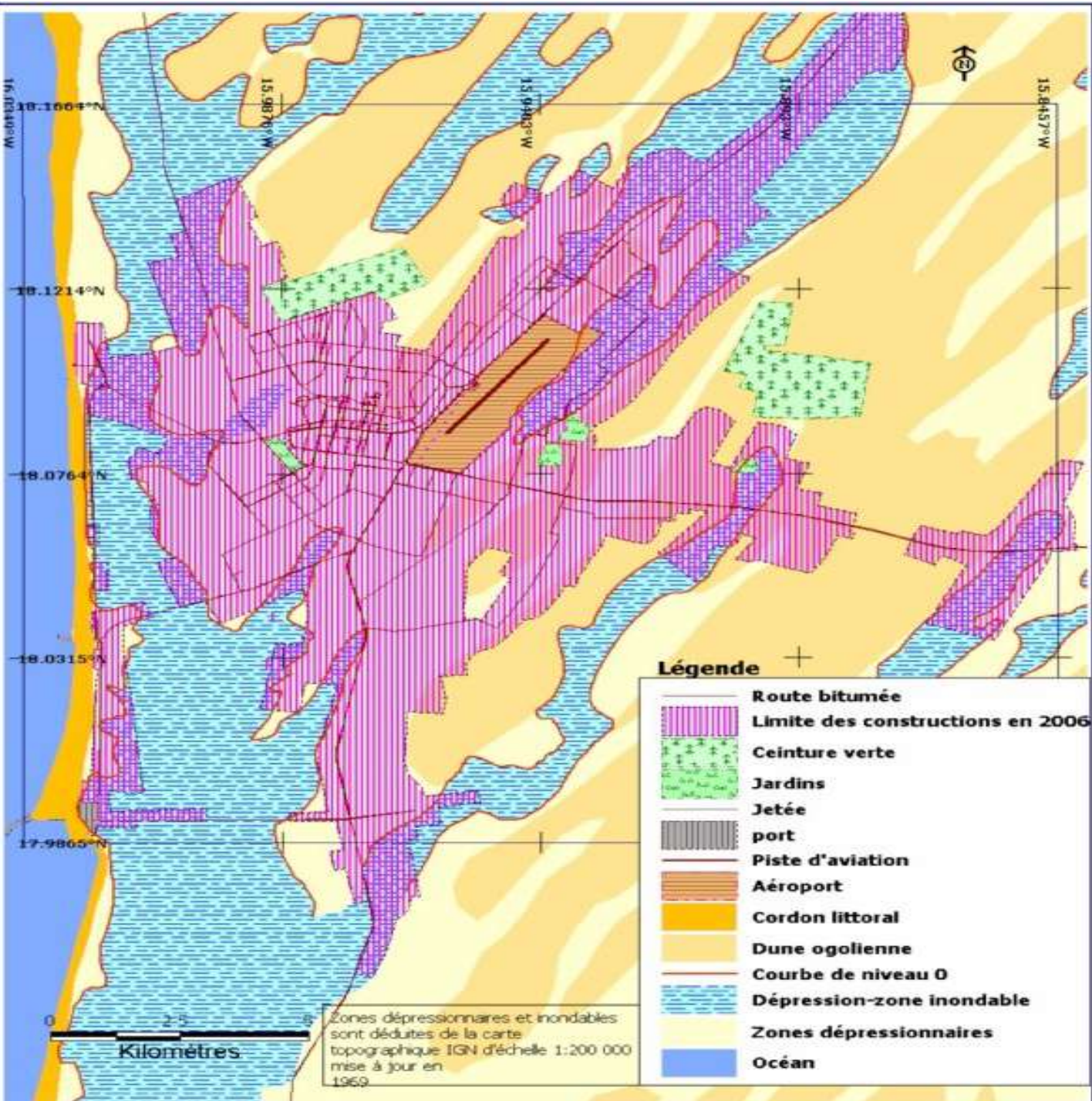
100 m

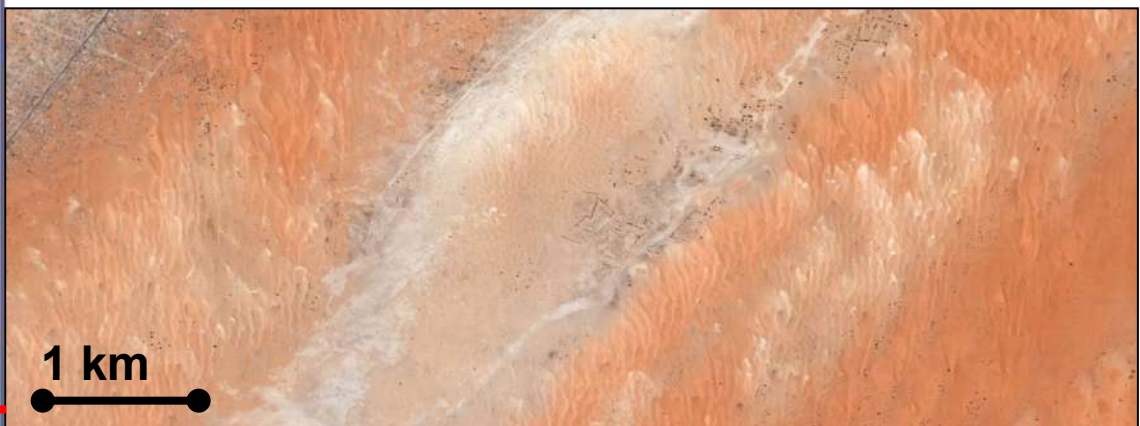
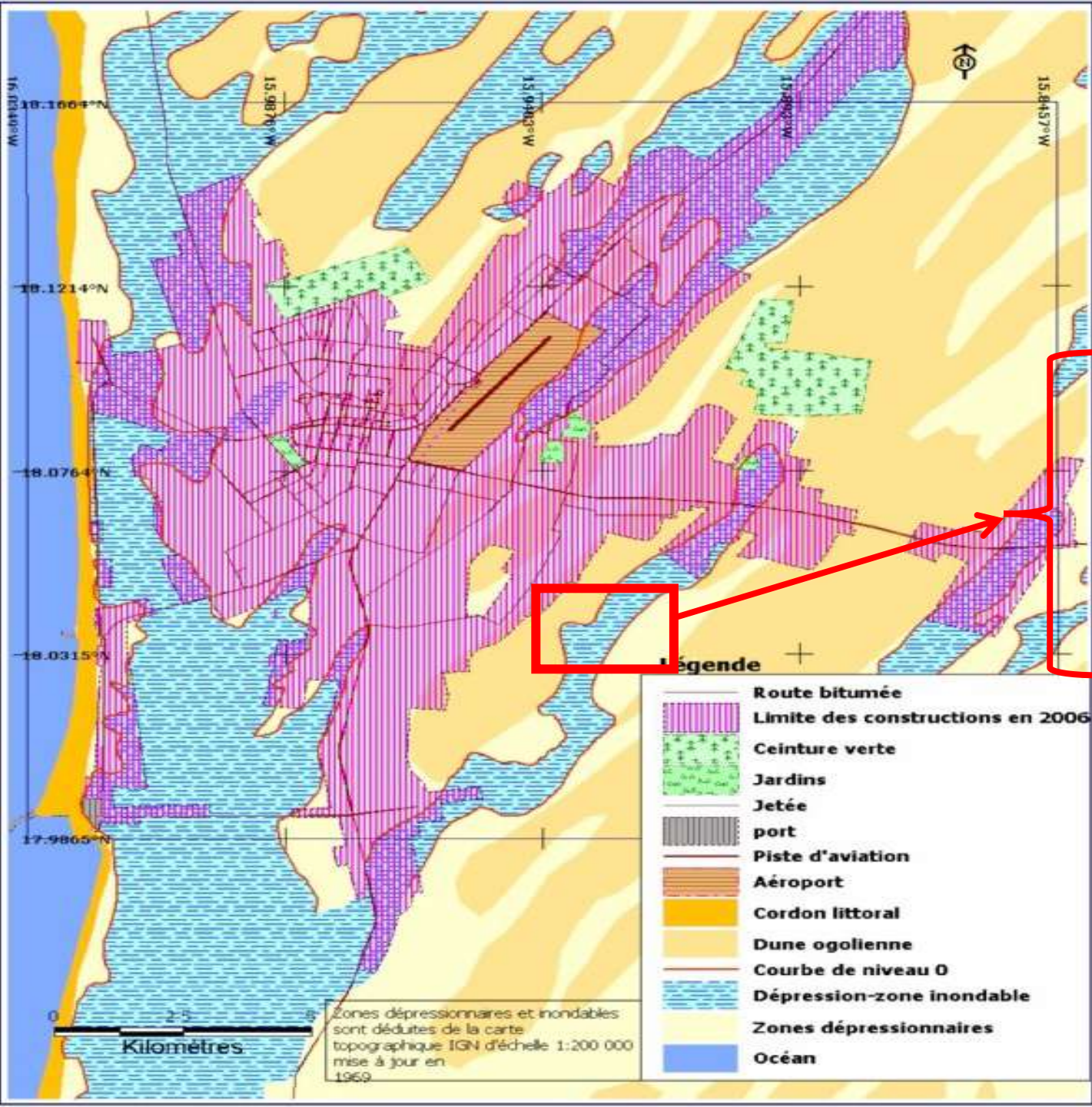
An aerial photograph of a desert landscape, likely in the Middle East, showing a grid of roads and a large, dark, irregularly shaped area in the center. The terrain is sandy and sparsely vegetated. A red double-headed arrow at the bottom left indicates a scale of 100 meters. The date 30-04-2016 is displayed in the top right corner in red text on a black background. A smaller date 30/4/2016 is visible in the top left corner.

# **Nouakchott, Mauritanie**

**Lorsque les migrations pour échapper à la sécheresse exposent les populations déplacées aux inondations**







**15/06/2010**



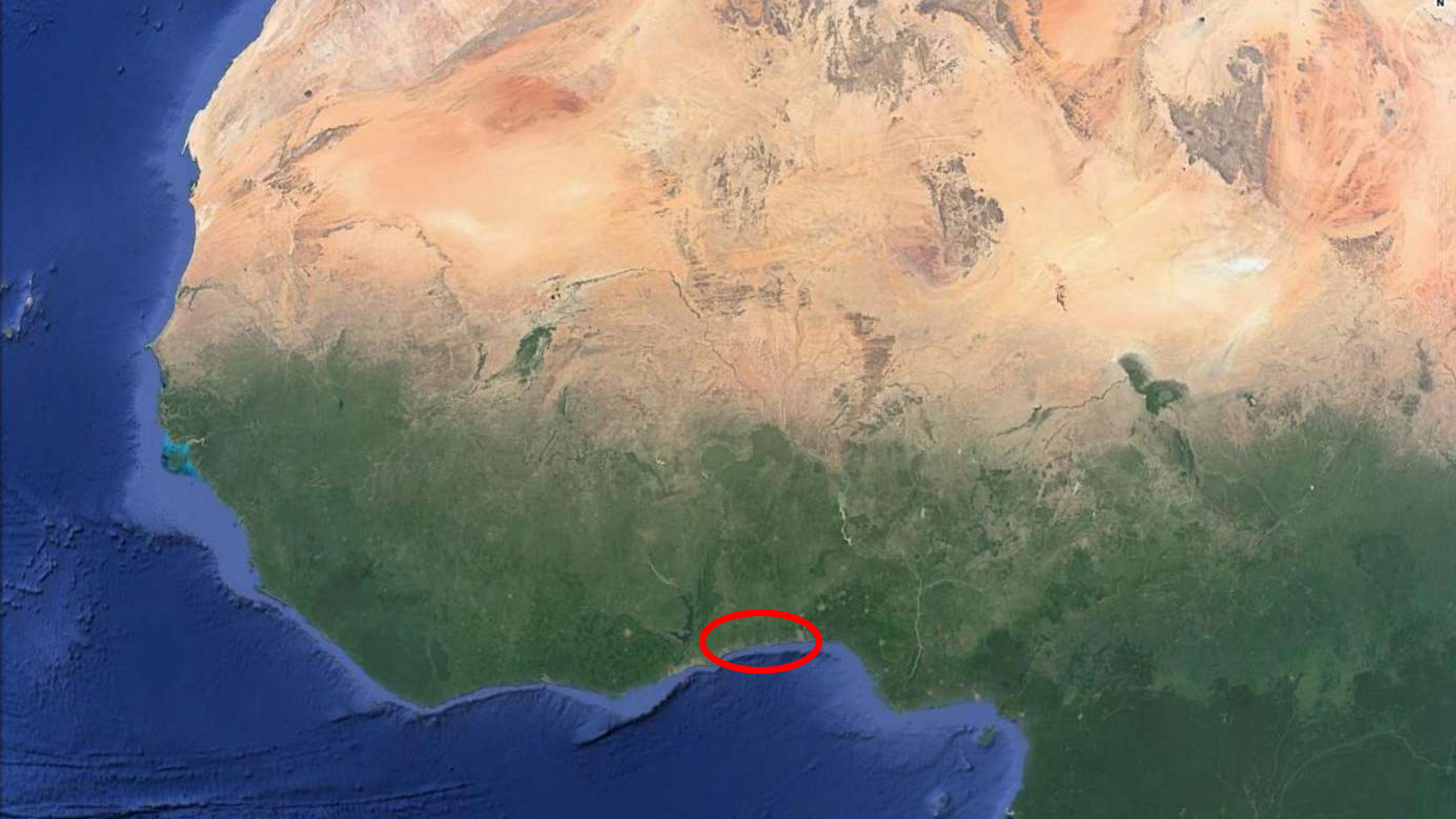
**25/12/2012**



# Cotonou, Benin

**Lorsque l'« immobilité forcée »  
des populations piégées a un effet majeur  
sur les situations de précarité**

Ozer *et al.*, 2017  
De Longueville *et al.*, 2020  
Chokpon *et al.*, 2021



Ouest Bénin 22/12/2002



Google Earth

image © 2013 DigitalGlobe



100 m

Ouest Bénin 09/11/2017



180 m

Google Earth

Image © 2018 CNES / Airbus

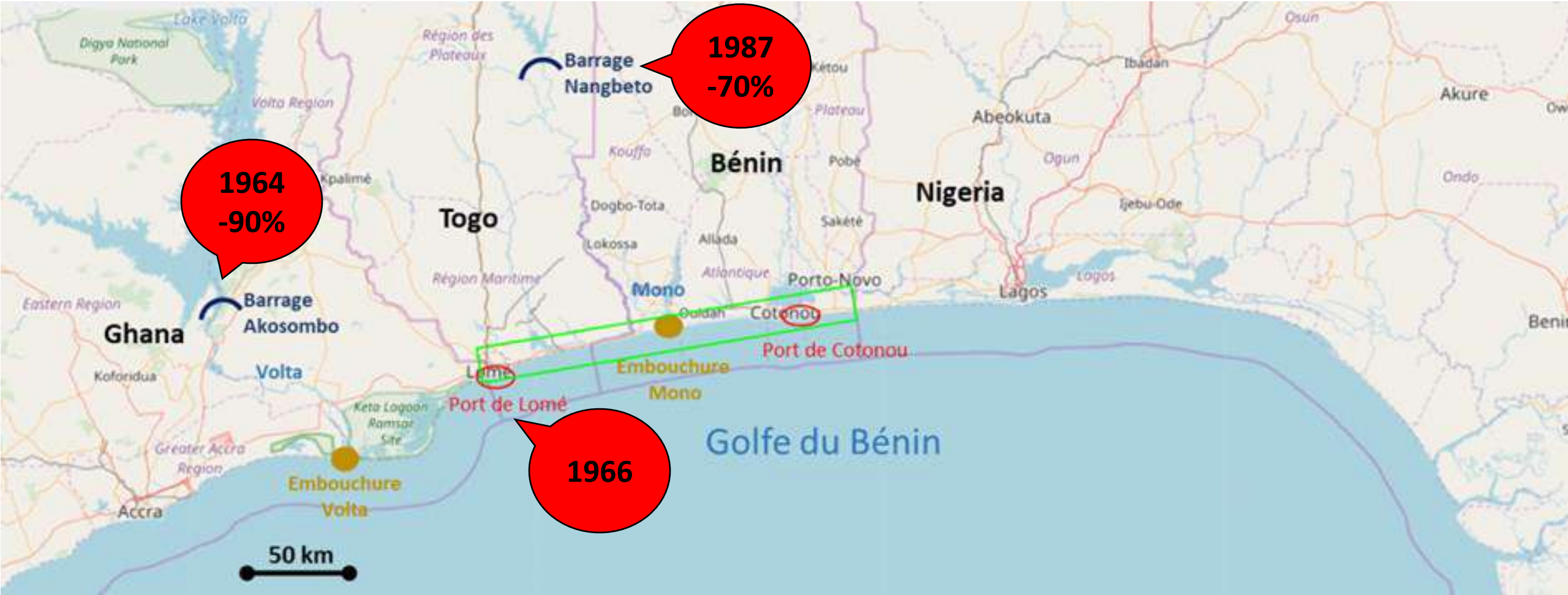


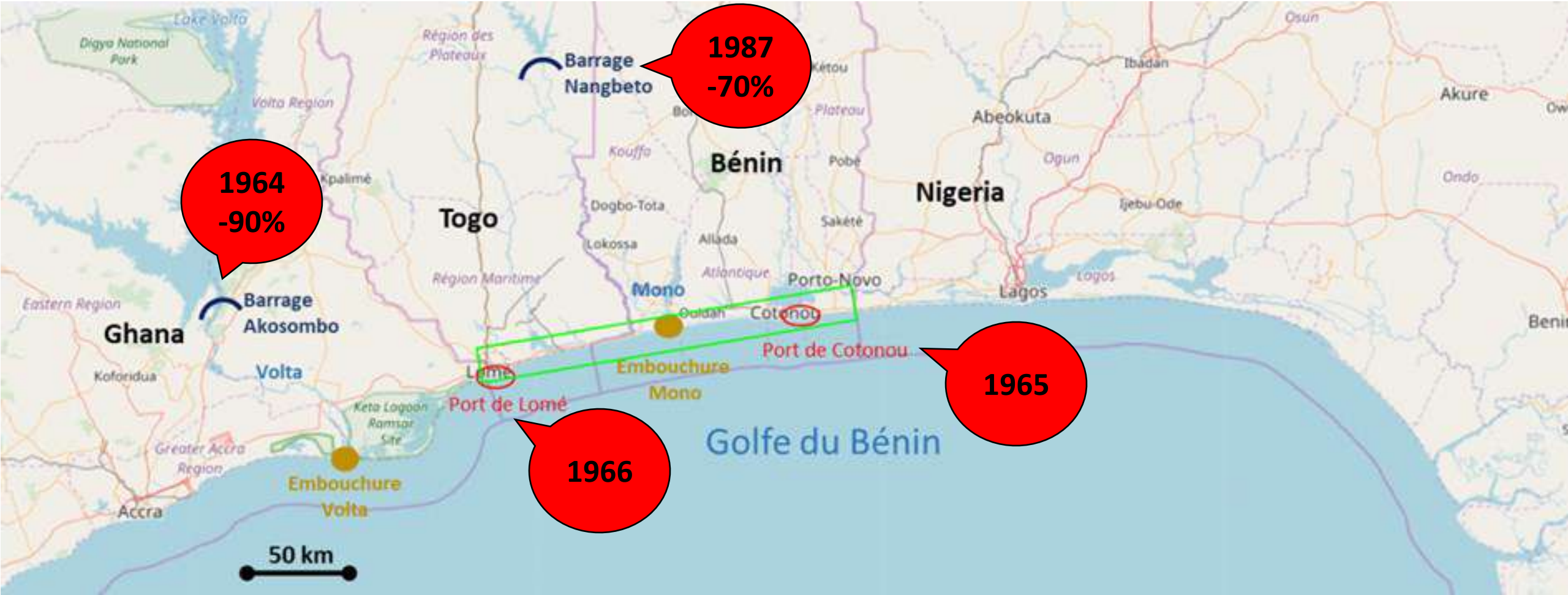
100 m

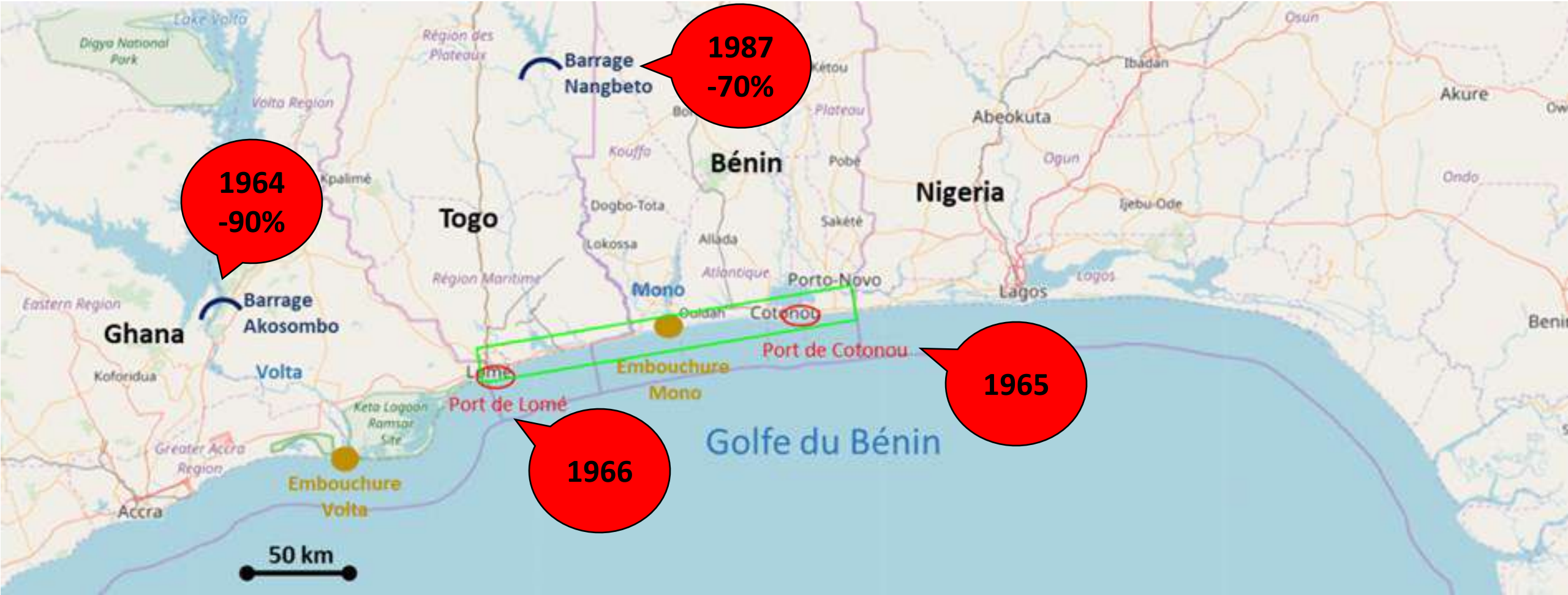


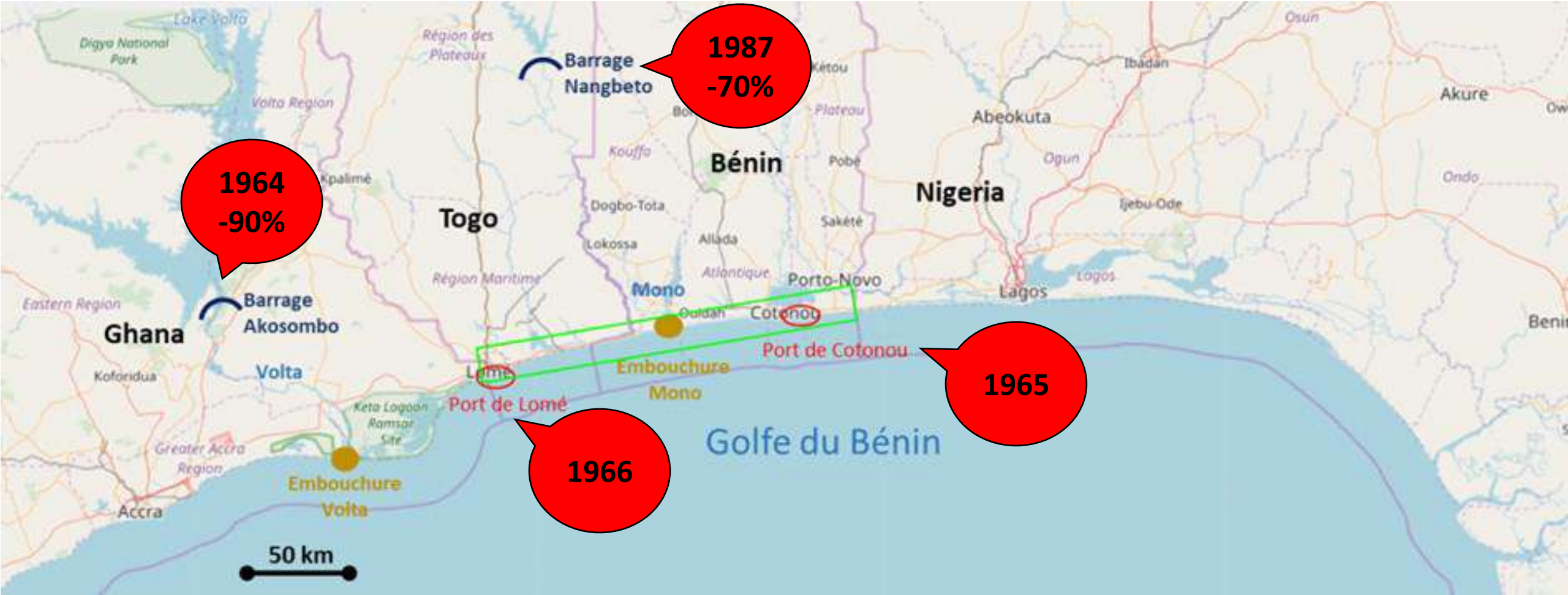


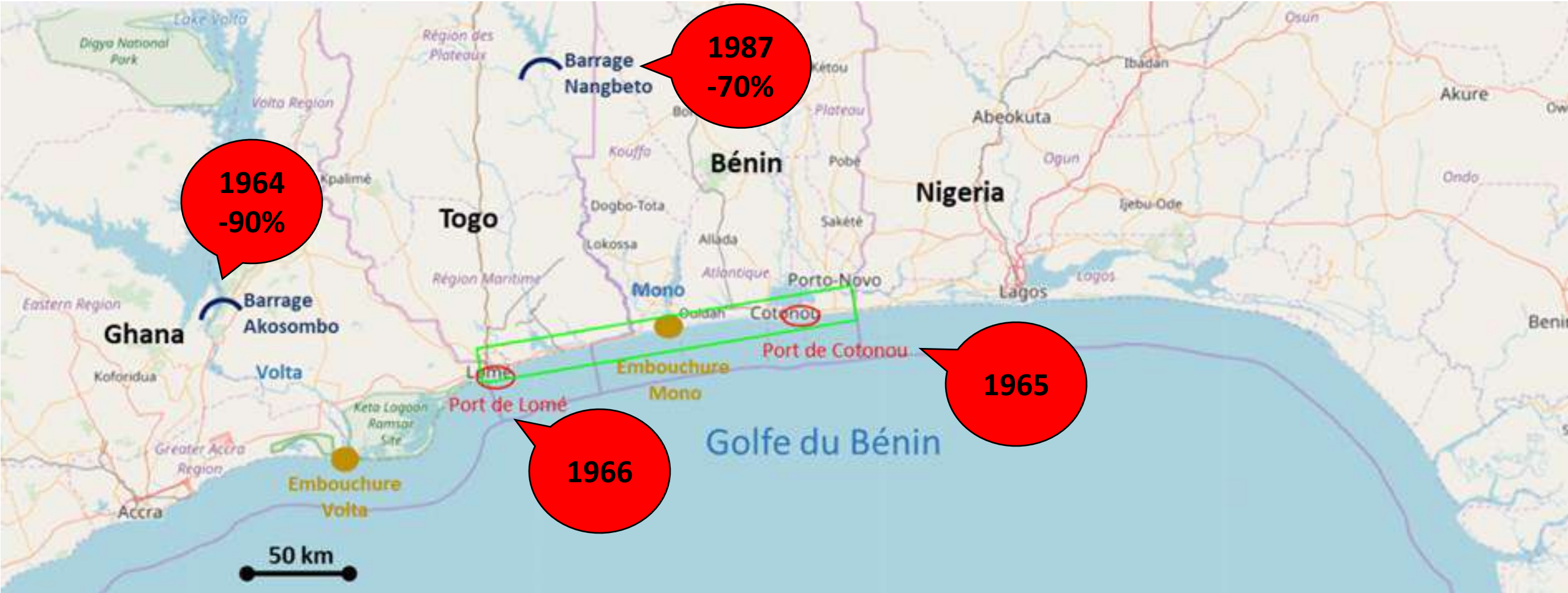




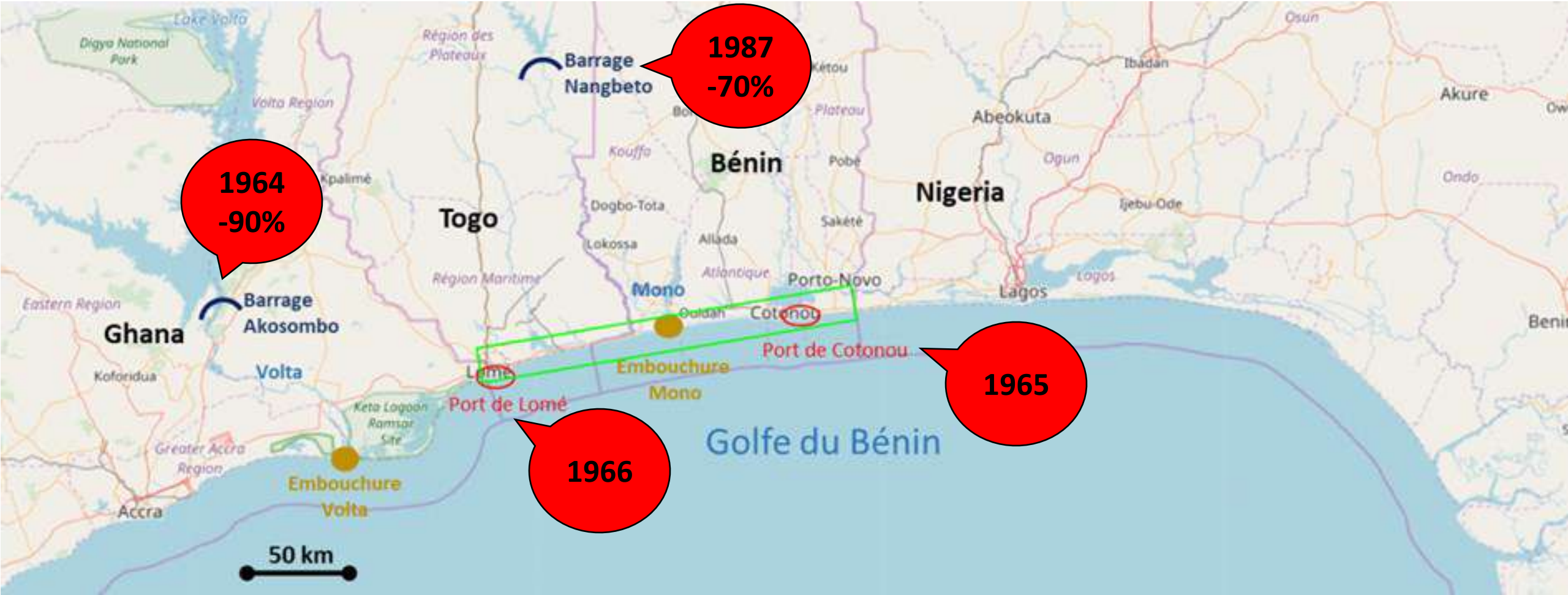








- + Extraction de sédiments (sable)
- + Destruction de la mangrove
- + Élévation du niveau de la mer



6000 BP

1965 2016



# De qui parle-t-on?



Population aisée



Villa



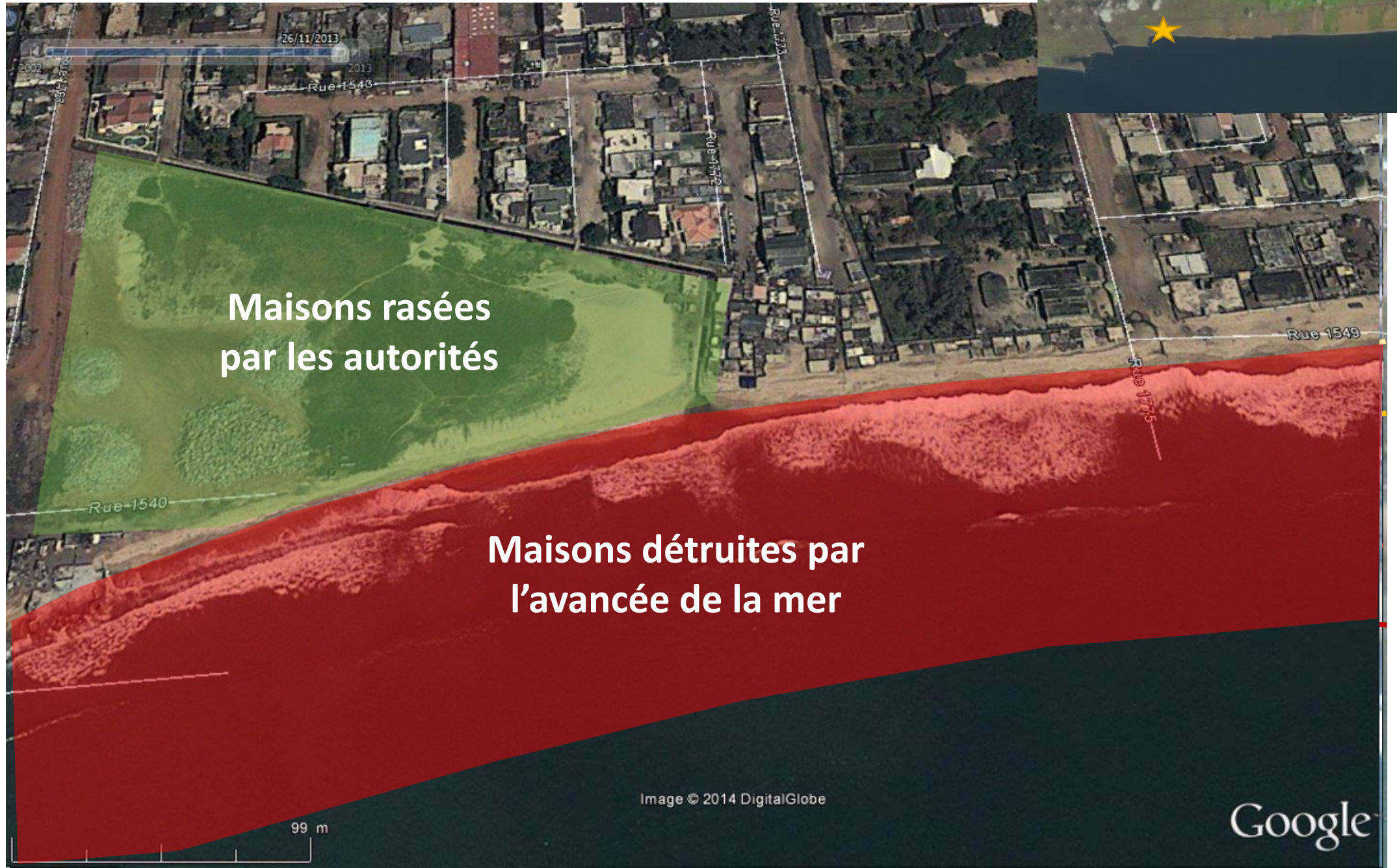
Villa

Taudis

Population précaire



# Erosion et impact sur l'habitat



18/12/2002

25/03/2004

08/11/2011

26/11/2013

# Destruction progressive des villas



# Destruction rapide des taudis



Taudis détruits en 24h (30-31 mai 2014)



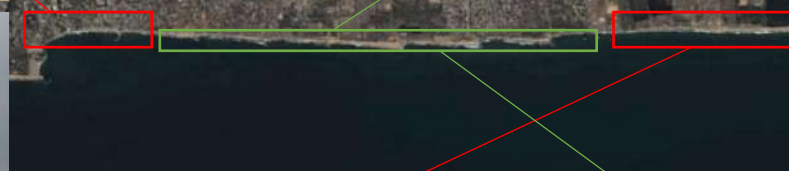
# Dynamique de relocalisation



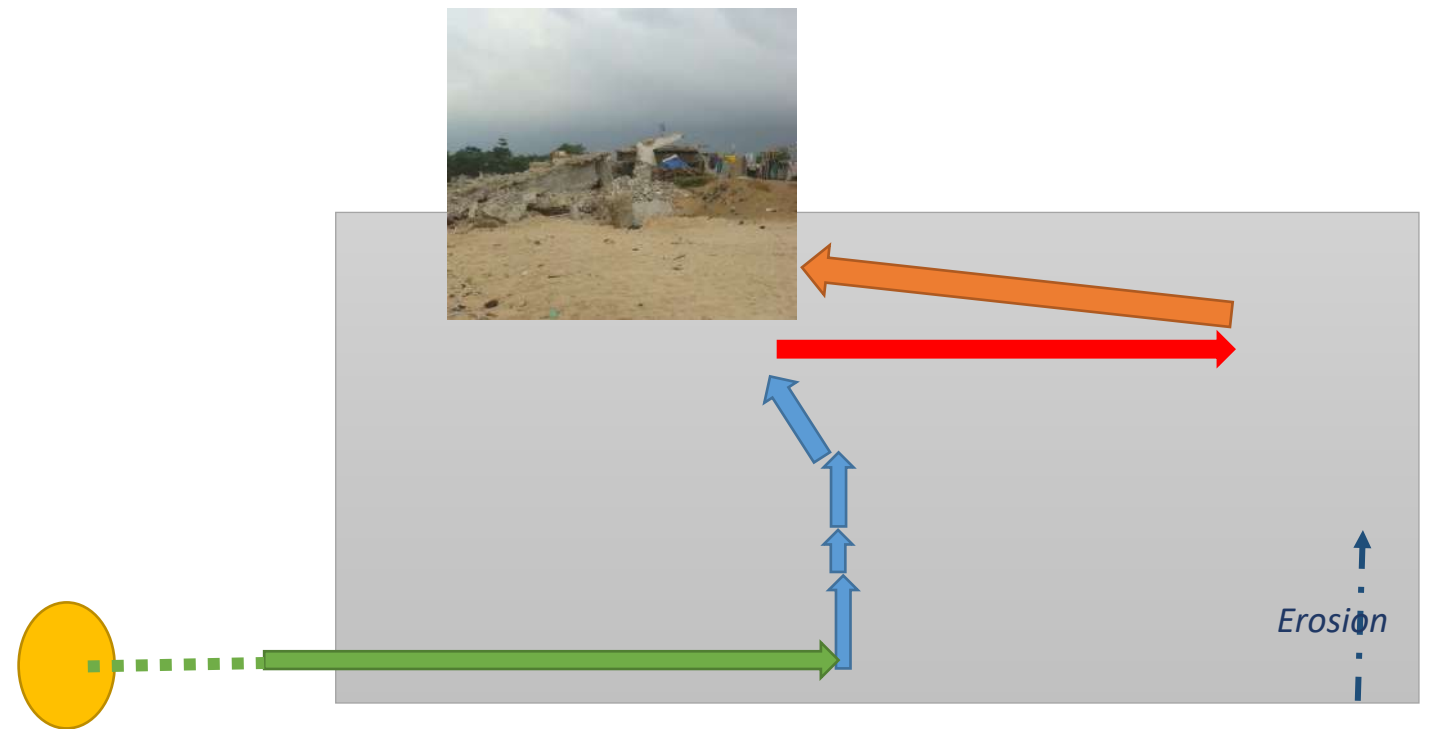
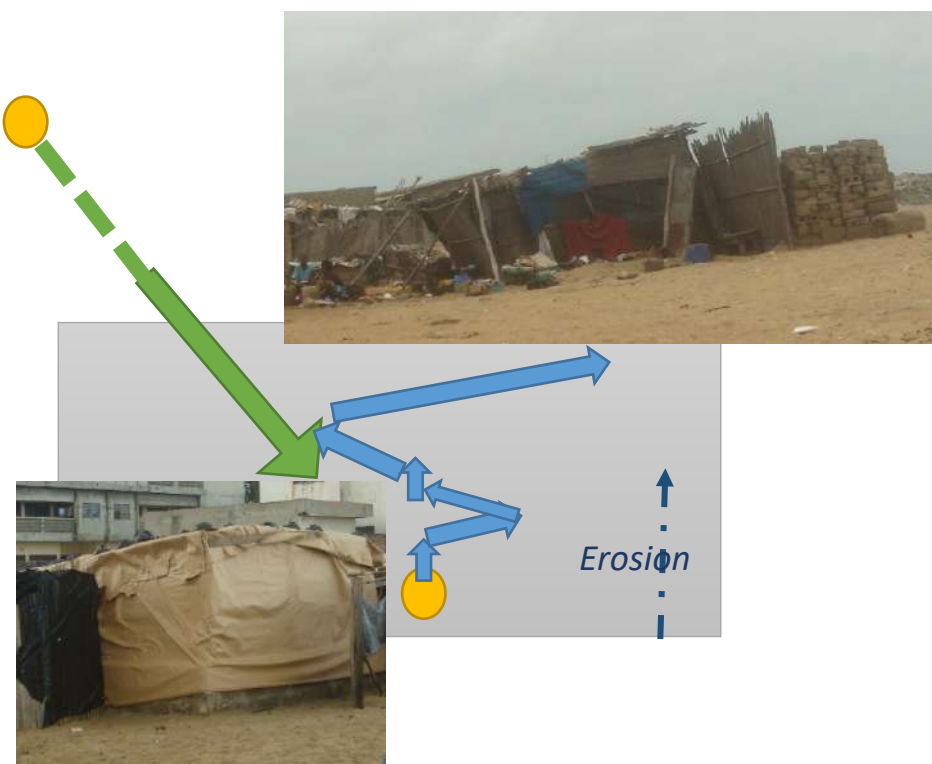
# Quelles sont les populations 'piégées' par l'érosion ?

Pêcheurs

Population précaire



# Caractéristiques et dynamiques des populations piégées

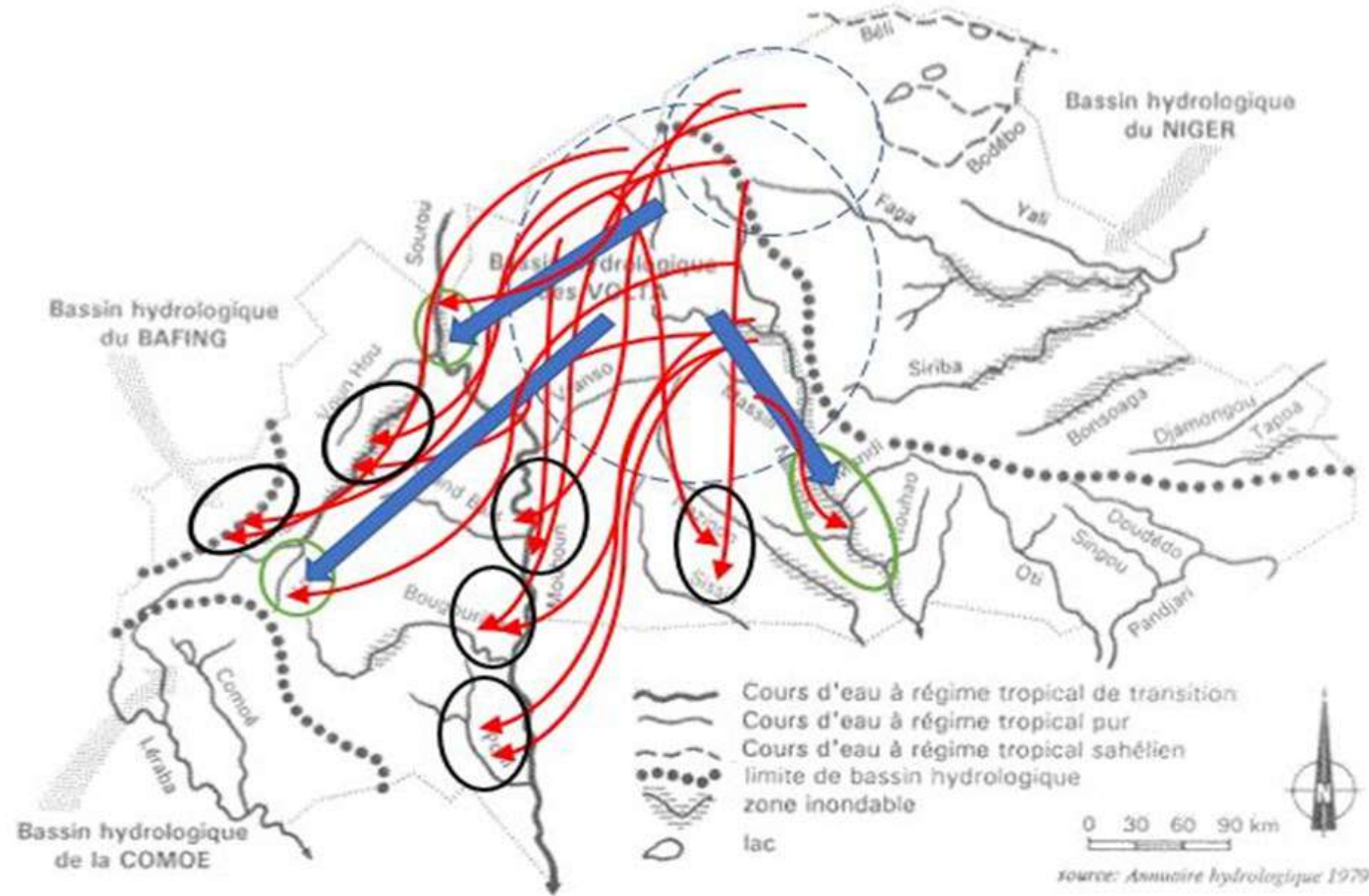


# 'Mesures' prises par la population



# **Les points de bascule sociaux face aux changements climatiques et environnementaux**

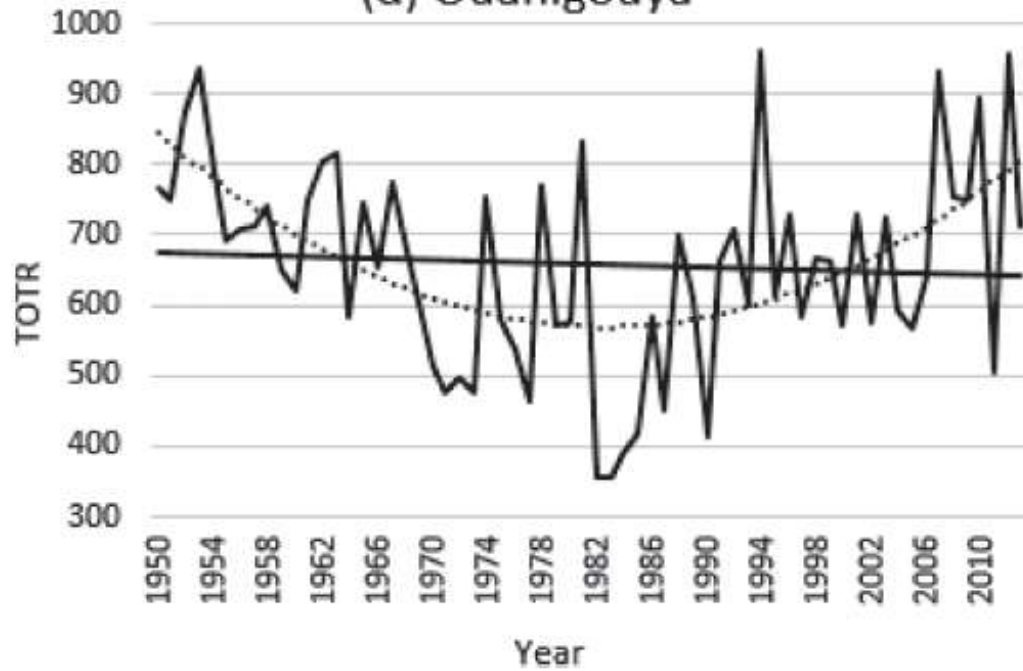
# Vastes migrations provoquées par les graves sécheresses des années 1970 et 1980



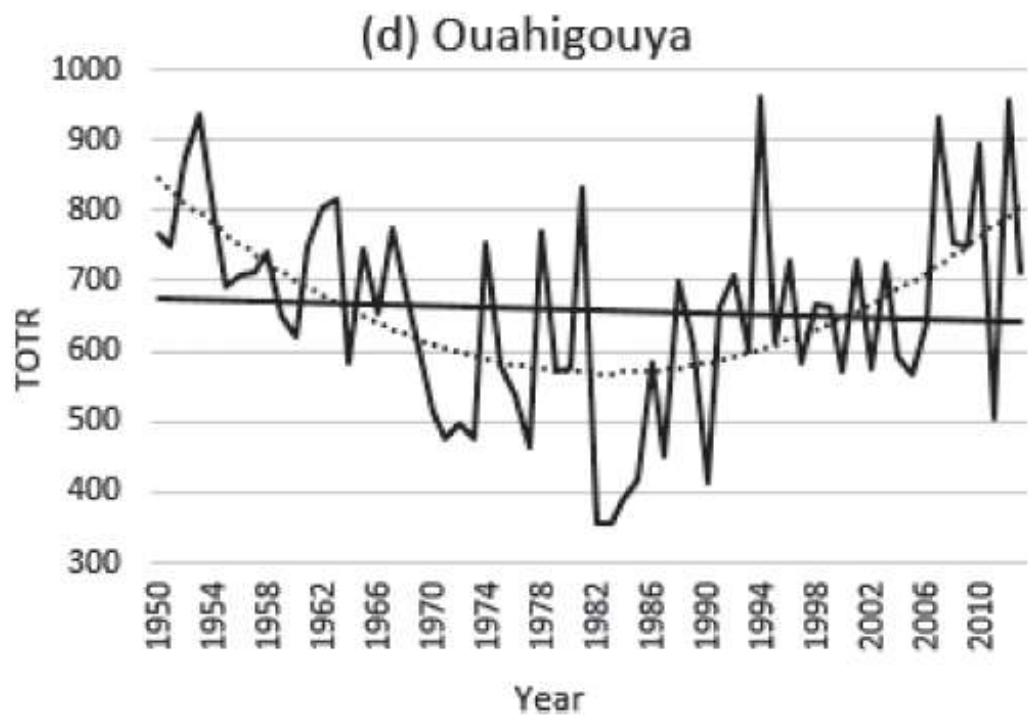
- Zones d'accueil des migrations agricoles organisées par l'Etat
- Zones d'accueil des migrations agricoles volontaires sans intervention de l'Etat
- Zones de départ de la majorité des migrants agricoles
- Mouvements migratoires organisés
- Mouvements migratoires volontaires

# Précipitations

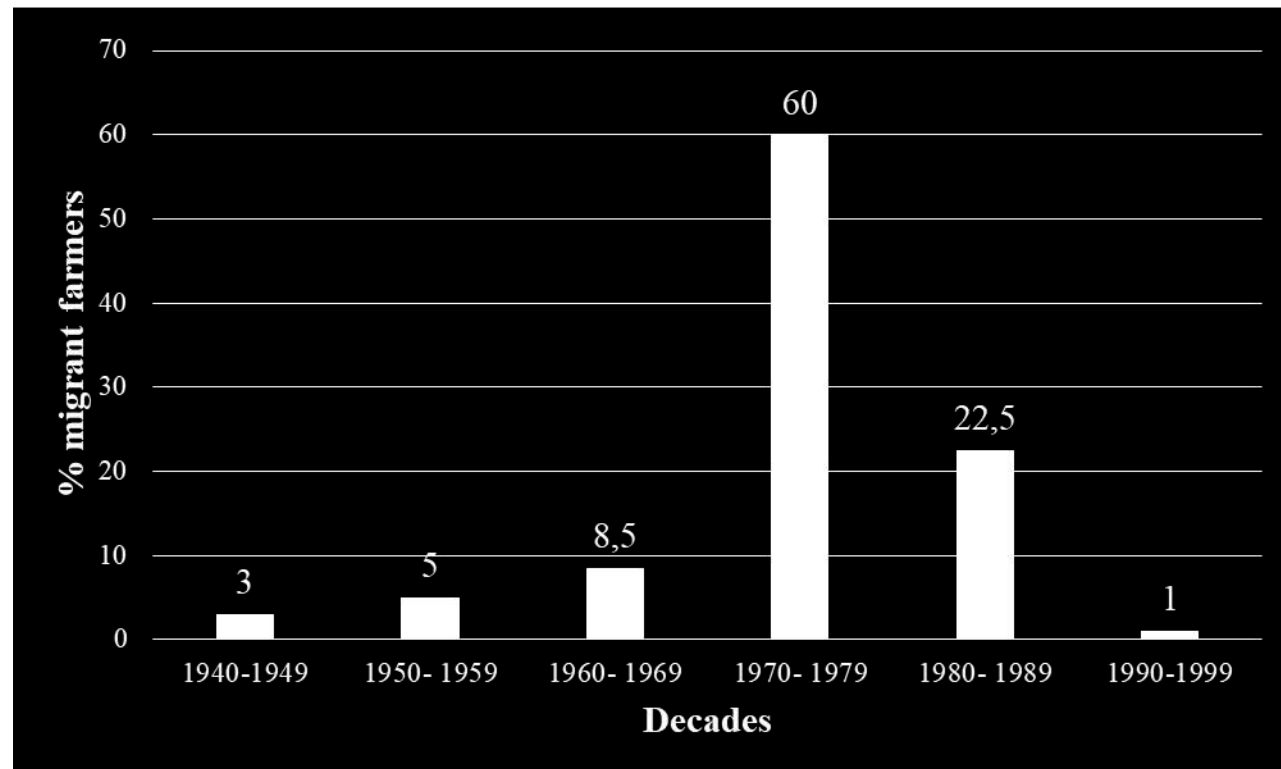
(d) Ouahigouya



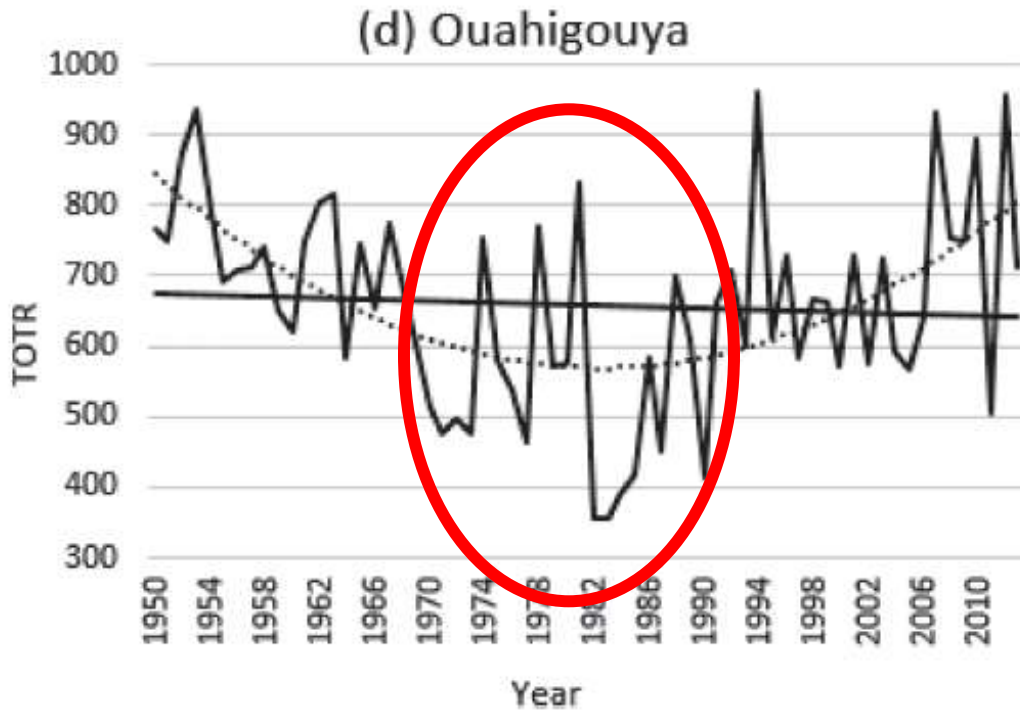
# Précipitations



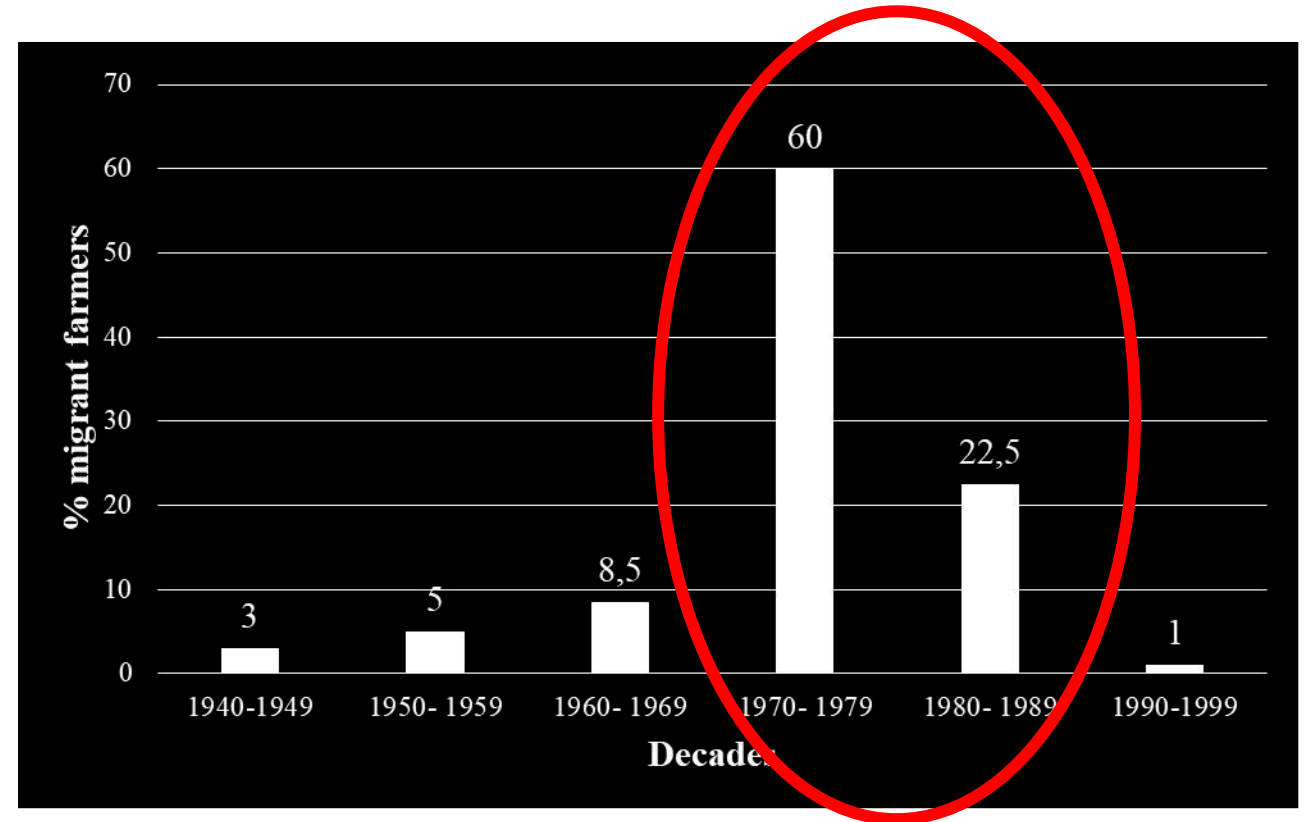
# Périodes de migration



# Précipitations



# Périodes de migration



## Principaux facteurs de migration :

Dégradation des terres : **46,5 %**

Sécheresse : **28 %**

Insuffisance des terres cultivables : **12 %**

# Avec le changement climatique, des « déplacés » de plus en plus nombreux

Partout dans le monde, des populations sont contraintes de fuir leur terre et leur foyer du fait de l'intensification des catastrophes naturelles extrêmes.

LE MONDE | 02.11.2017 à 06h41 • Mis à jour le 02.11.2017 à 10h50 |

Par **Simon Roger**

Abonnez vous à partir de 1 €

Réagir ★ Ajouter



Partager (685)

Twitter



# Conclusion

Anthropisation(s)

Déplacements forcés / Populations piégées

‘Illégalités’

Précarité – renforcement des inégalités

Inhabitabilité

***Anthropocene***